

PLASMA™

Hybrid Coated Brass Wire

- Gamma-Phase Intermetallic Zinc Alloy (Cu₅Zn₈) coated wire with brass core.
- Increased performance even at brass wire settings. Optimized settings will improve performance even further.
- Suitable for all machine types.
- Excellent auto-threading capability.
- Exclusive to GIP



GLOBAL
INNOVATIVE
PRODUCTS

Innovative products for innovative companies.
www.gip-edmwire.com

PLASMA™

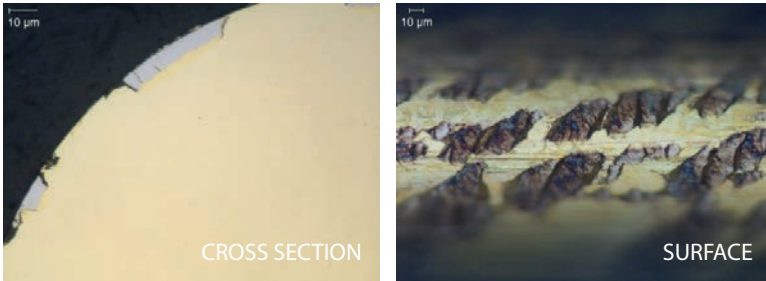
Hybrid Coated Brass Wire

WIRE SPECIFICATIONS

PRODUCT	GIP Plasma
COLOR	Yellow-Gold
COATING	Gamma-Phase (Cu ₅ Zn ₈) Alloy
CORE	63Cu - 37Zn
TENSILE STRENGTH	900 N/mm ²
ELONGATION	2%
CONDUCTIVITY	22 % IACS
DIAMETERS	0.20mm 0.25mm 0.30mm 0.008" 0.010" 0.012"



WIRE DETAILS



SPOOL, WEIGHT & PACKING

SPOOL TYPE	DIMENSIONS (in/mm)			STD WEIGHT		SPOOLS /BOX	DIMENSIONS
	D	W	D ¹	LBS	KG		
P5	6.30 / 160	4.49 / 114	0.79 / 20	11 / 13.2	5 / 6	4	
P10	7.87 / 200	5.28 / 134	0.98 / 25	22	10	2	
P20	9.85 / 250	5.51 / 140	1.3 / 34	44	20	1	
DIN125	4.92 / 125	4.92 / 125	0.63 / 16	7.7	3.5	4	
DIN160	6.30 / 160	6.30 / 160	0.87 / 22	17.6	8	2	
DIN200	7.87 / 200	7.87 / 200	0.87 / 22	35.2	16	1	
DIN250	N/A	N/A	N/A	55	25	1	



GLOBAL
INNOVATIVE
PRODUCTS

Innovative products for innovative companies.
www.gip-edmwire.com